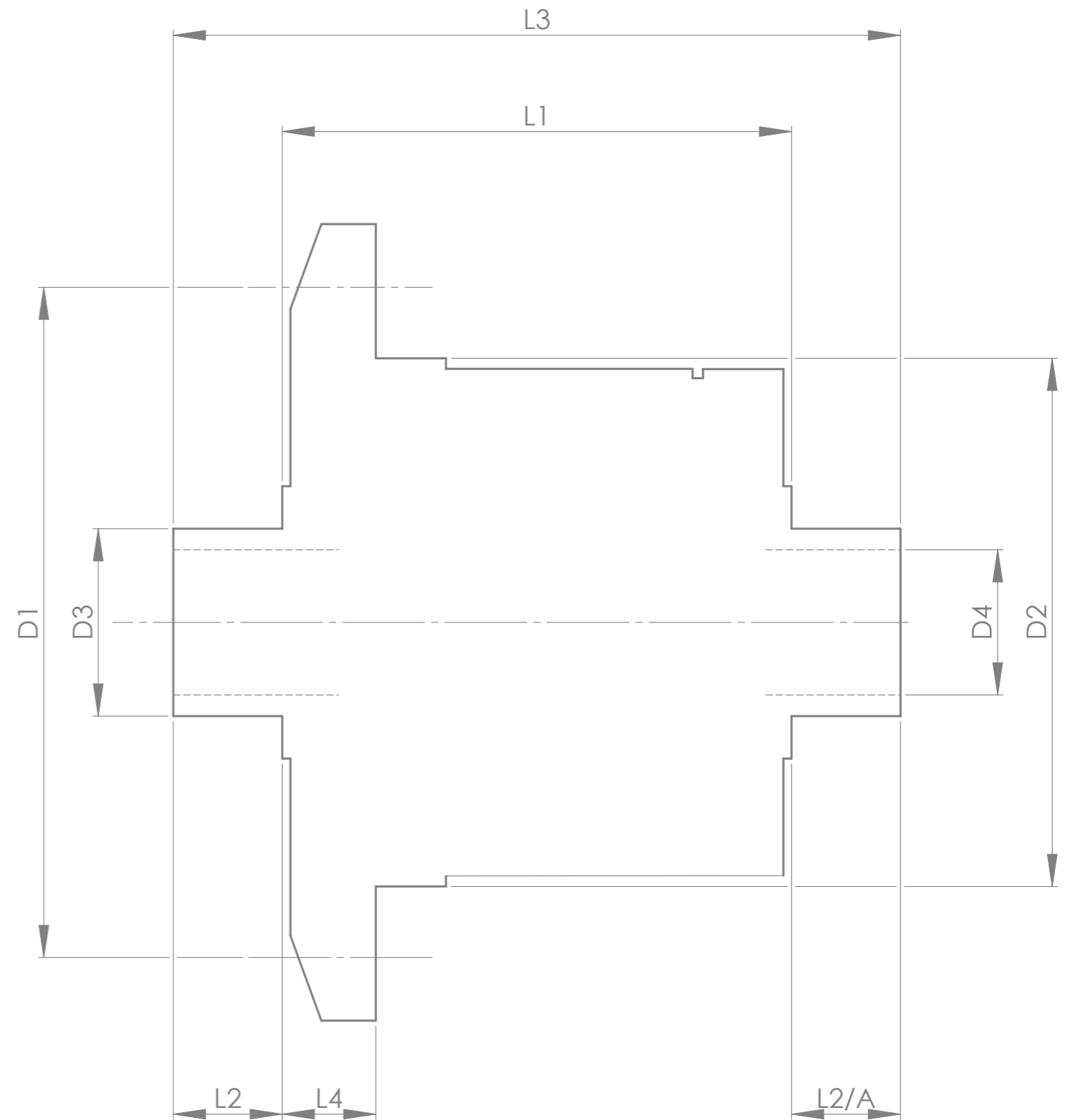


		INCH	MM
CROWN WHEEL BOLT PCD	D1	5.905	150
No. OF BOLTS		12	12
THREAD / THRO' HOLE		0.495	12.6
CROWN WHEEL SPIGOT DIA	D2	4.7645	121.0
BEARING DIA	D3	1.9691	50.0
BEARING DISTANCE	L1	5.270	133.9
SPIGOT LENGTH	L2	0.870	22.1
	L2/A	0.860	21.8
OVERALL LENGTH	L3	7.000	177.8
BEARING/CROWN WHEEL	L4	0.425	10.8
BORE	D4	1.3786	35.0
DRIVE SHAFT SPLINE:-			
No. OF TEETH		43	
PITCH		32/64 DP	
TYPE		FILLET ROOT	SIDE FIT
PRESSURE ANGLE		45 DEG	



TITLE R.W.D. DIFF DATA SHEET.
SCALE 1:1 U.O.S. SHEET 1 OF 1
Drg. No. QDF10Q

NOTE:- SUN GEARS CONTAIN FLANGE RETAINERS

IF IN DOUBT, ASK.

Quaife Design & Development.

THIS DRAWING OR DESIGN IS STRICTLY CONFIDENTIAL & THE COPYRIGHT THEREIN IS THE EXCLUSIVE PROPERTY OF RT QUAIPE ENGINEERING LTD. AND MAY NOT BE USED COPIED OR EXHIBITED WITHOUT THEIR WRITTEN PERMISSION.

FINISH. MACH,	GRIND@G
LIMITS. FRACT. ± 1/64".	
DEC. ± 0.005".	
MATERIAL.	
TREATMENT.	
ISSUE. 01 DATE. 11.10.06	
DRAWN BY. J.P.D.	
Used In.	PORSCHE 998 CLUB SPORT 6 SPEED AUDI BOX