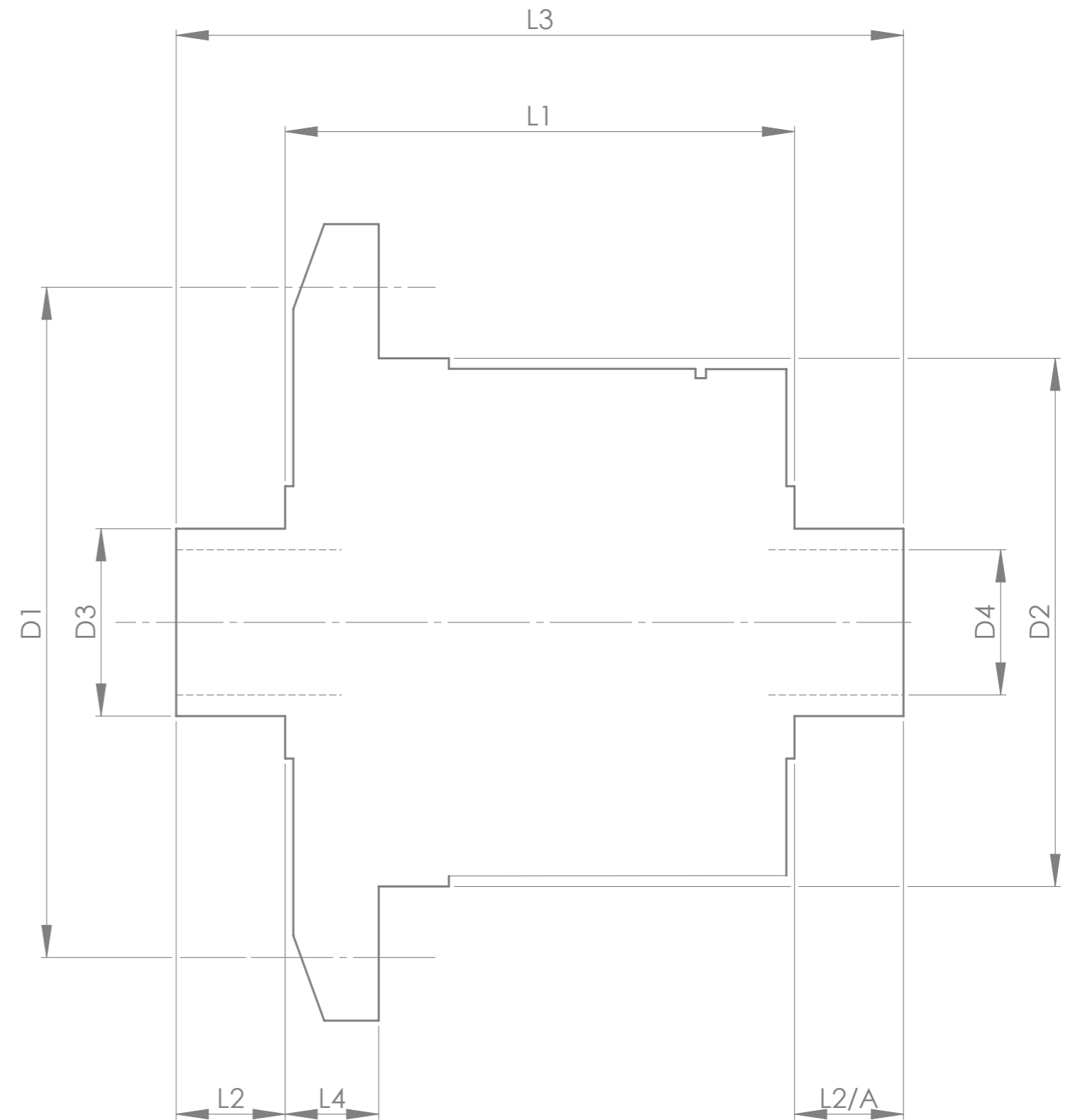


		INCH	MM
CROWN WHEEL BOLT PCD	D1	5.905	150
No. OF BOLTS		12	12
THREAD / THRO' HOLE		0.495	12.6
CROWN WHEEL SPIGOT DIA	D2	4.7645	121.0
BEARING DIA	D3	1.9691	50.0
BEARING DISTANCE	L1	5.335	135.5
SPIGOT LENGTH	L2	0.870	22.1
	L2/A	0.795	20.2
OVERALL LENGTH	L3	7.000	177.8
BEARING/CROWN WHEEL	L4	0.425	10.8
BORE	D4	1.3786	35.0
DRIVE SHAFT SPLINE:-			
No. OF TEETH		43	
PITCH		32/64 DP	
TYPE		FILLET ROOT	SIDE FIT
PRESSURE ANGLE		45 DEG	



TITLE R.W.D. DIFF DATA SHEET.
 SCALE 1:1 U.O.S. SHEET 1 OF 1
Drg. No. QDF7Q

NOTE:- SIMILAR TO QDF14Q, BUT WITH NO FLANGE RETAINERS

Quaife Design & Development.

IF IN DOUBT, ASK.

THIS DRAWING OR DESIGN IS STRICTLY CONFIDENTIAL & THE COPYRIGHT THEREIN IS THE EXCLUSIVE PROPERTY OF RT QUAIFFE ENGINEERING LTD. AND MAY NOT BE USED COPIED OR EXHIBITED WITHOUT THEIR WRITTEN PERMISSION.

FINISH. MACH, GRIND@G
 LIMITS. FRACT. ± 1/64".
 DEC. ± 0.005".
 MATERIAL.
 TREATMENT.
 ISSUE. 01 DATE. 19.5.05
 DRAWN BY. M.L.M.
Used In. PORSCHE 996 6 Speed